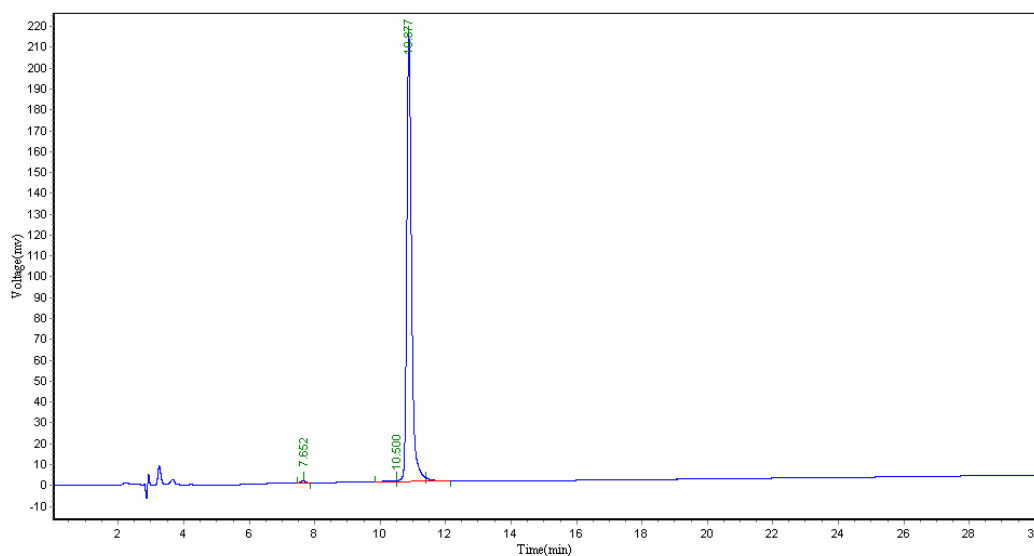


### The conditions:

Column:	Xbridge BEH130 C18, 4.6*250mm, 5um		
Solvent A :	0.1%Trifluoroacetic in 100% Acetonitrile		
Solvent B :	0.1%Trifluoroacetic in 100% Water		
Gradient:	A	B	
	0.0min	30%	70%
	25.0min	55%	45%
	25.1min	100%	0%
	30.0min	Stop	
Flow rate:	1.0ml/min		
Wavelength:	220nm		
Volume:	20ul		

### The Map :



### The data:

Peak No.	Peak ID	Ret Time	Height	Area	Conc.
1		7.652	1115.107	10281.149	0.4619
2		10.500	424.226	10423.222	0.4683
3		10.877	213865.563	2185650.000	98.2022
4		10.877	1933.225	19309.305	0.8676
TOTAL		217338.121	2225663.676	100.0000	