



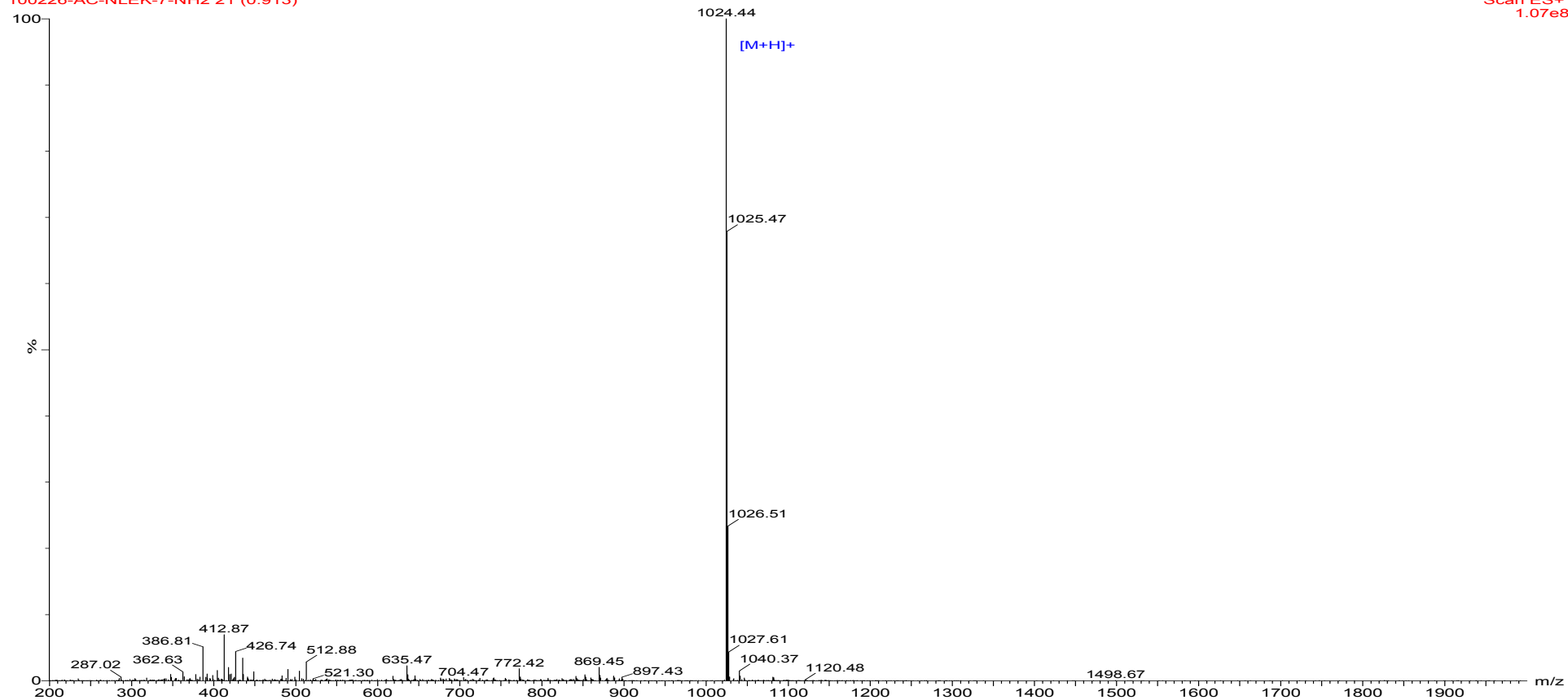
Melanotan US Inc.  
Leader in Peptide Synthesis

# MS Report MELANOTAN II

MW:1024.20

100226-AC-NLEK-7-NH2 21 (0.913)

Scan ES+  
1.07e8



# MS Report MELANOTAN II

MW:1024.20

## MS conditions:

Probe:	ESI	Gas Flow:	350L/hr
Cone:	50V	T.Flow:	0.2ml/min
Capillary:	3.00KV	Desovation Temp:	350°C
Extractor:	5V	B. conc:	50%H2O/50%ACN