

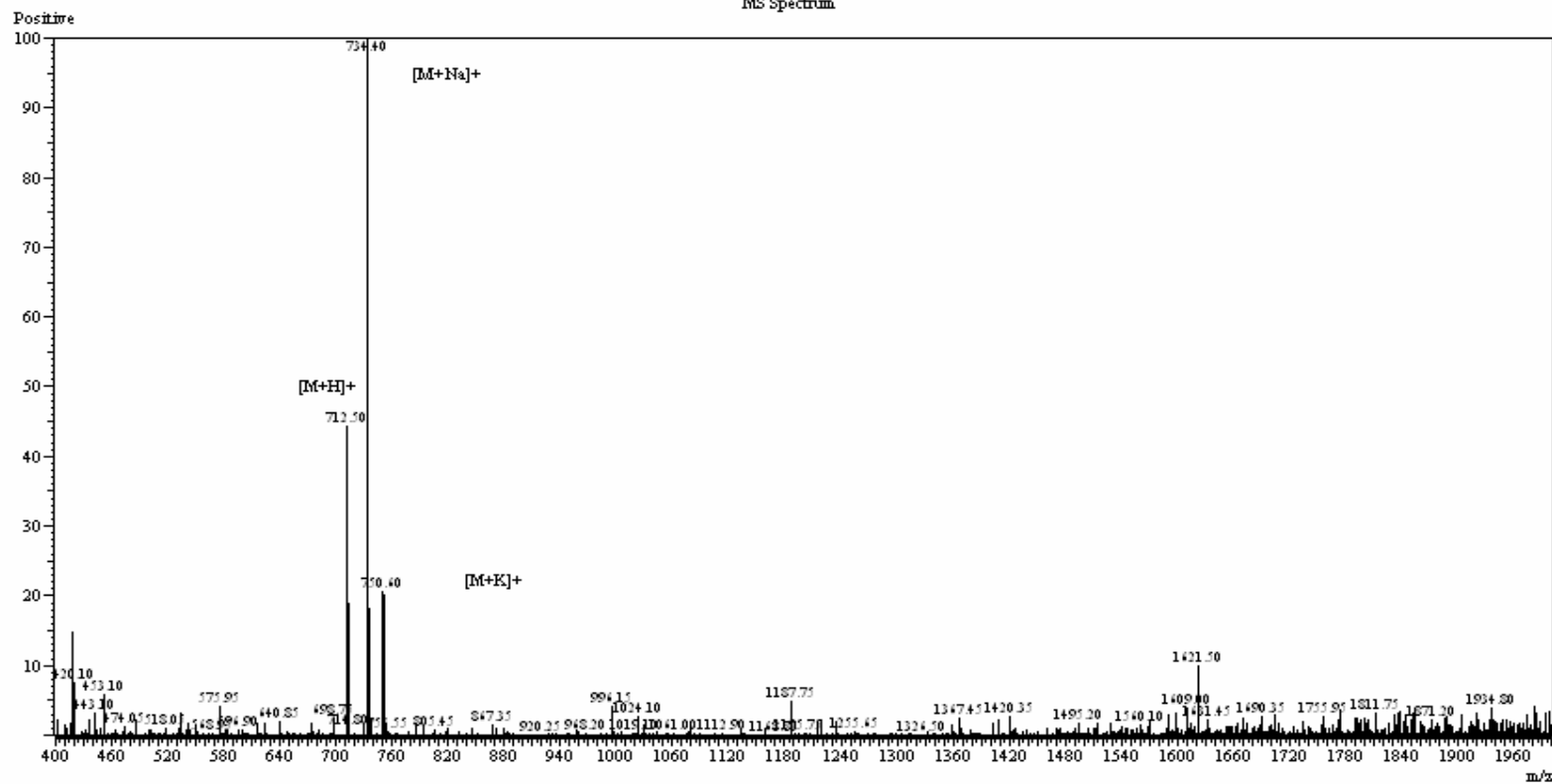


Melanotan US Inc.  
Leader in Peptide Synthesis

# MS Report IPAMORELIN

MW: 712.03

MS Spectrum



# MS Report

## IPAMORELIN

MW: 712.03

### MS conditions:

Probe:	ESI	Probe bias:	+4.5kv
Nebulizer Gas Flow:	1.5L/min	Detector:	1.5kv
CDL:	-20.0v	T. Flow:	0.2ml/min
CDL Temp:	250°C	B. conc:	50%H2O/50%ACN
Block Temp:	200°C		