

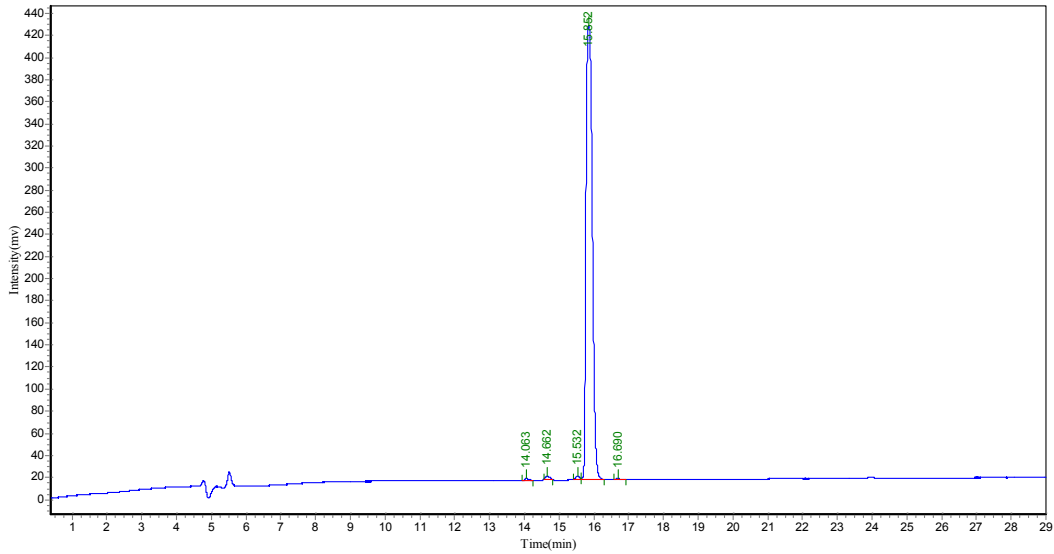
HPLC Report

IPAMORELIN

The conditions:

Column:	4.6×250mm,Venusil XBP-C18		
Solvent A :	0.1%Trifluoroacetic in 100% Acetonitrile		
Solvent B :	0.1%Trifluoroacetic in 100% Water		
Gradient:	A	B	
	0.01min	25%	75%
	25.0min	50%	50%
	30 min	100%	0%
	35.0min	Stop	
Flow rate:	1.0ml/min		
Wavelength:	220nm		
Volume:	5ul		

The Map :



The data:

Peak No.	Ret Time	Height	Area	Conc.
1	14.063	1491.340	12224.010	
0.2365				
2	14.662	3036.398	25249.588	
0.4884				
3	15.532	3343.894	24730.586	
0.4784				
4	15.852	41094.500	5098289.000	98.6252
5	16.690	875.200	8864.033	0.1715
Total		100.0000		