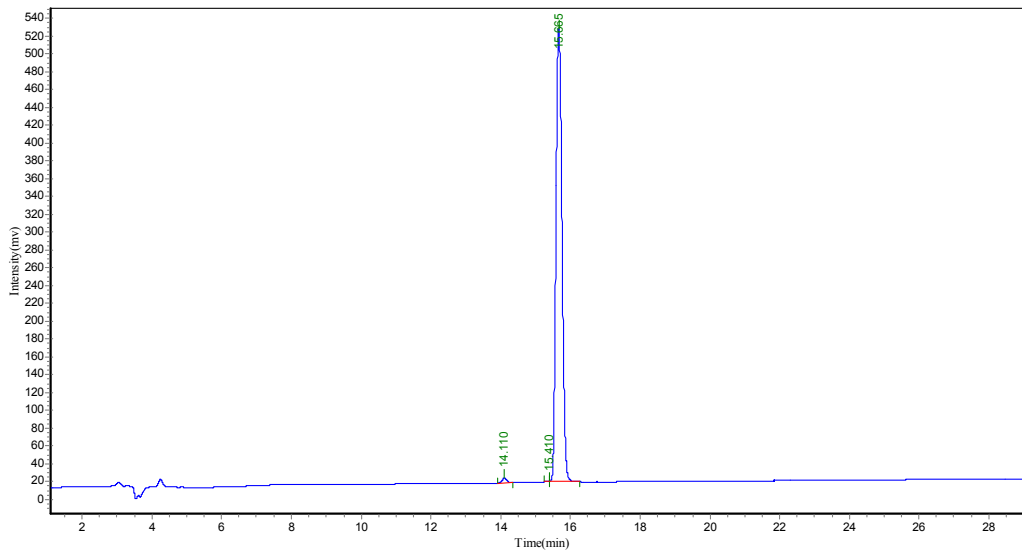


The conditions:

Column:	4.6×250mm,Venusil XBP-C18		
Solvent A :	0.1%Trifluoroacetic in 100% Acetonitrile		
Solvent B :	0.1%Trifluoroacetic in 100% Water		
Gradient:	A	B	
	0.0min	30%	70%
	25.0min	55%	45%
	25.1min	100%	0%
	30.0min	Stop	
Flow rate:	1.0ml/min		
Wavelength:	220nm		
Volume:	5ul		

The Map :



The data:

Conc.	Peak No.	Ret Time	Height	Area	
	1	14.110	5705.877	52413.520	
0.8464	2	15.410	1166.003	5482.516	
0.0885	3	15.665	509104.188	6134584.000	99.0651
	Total		100.0000		