

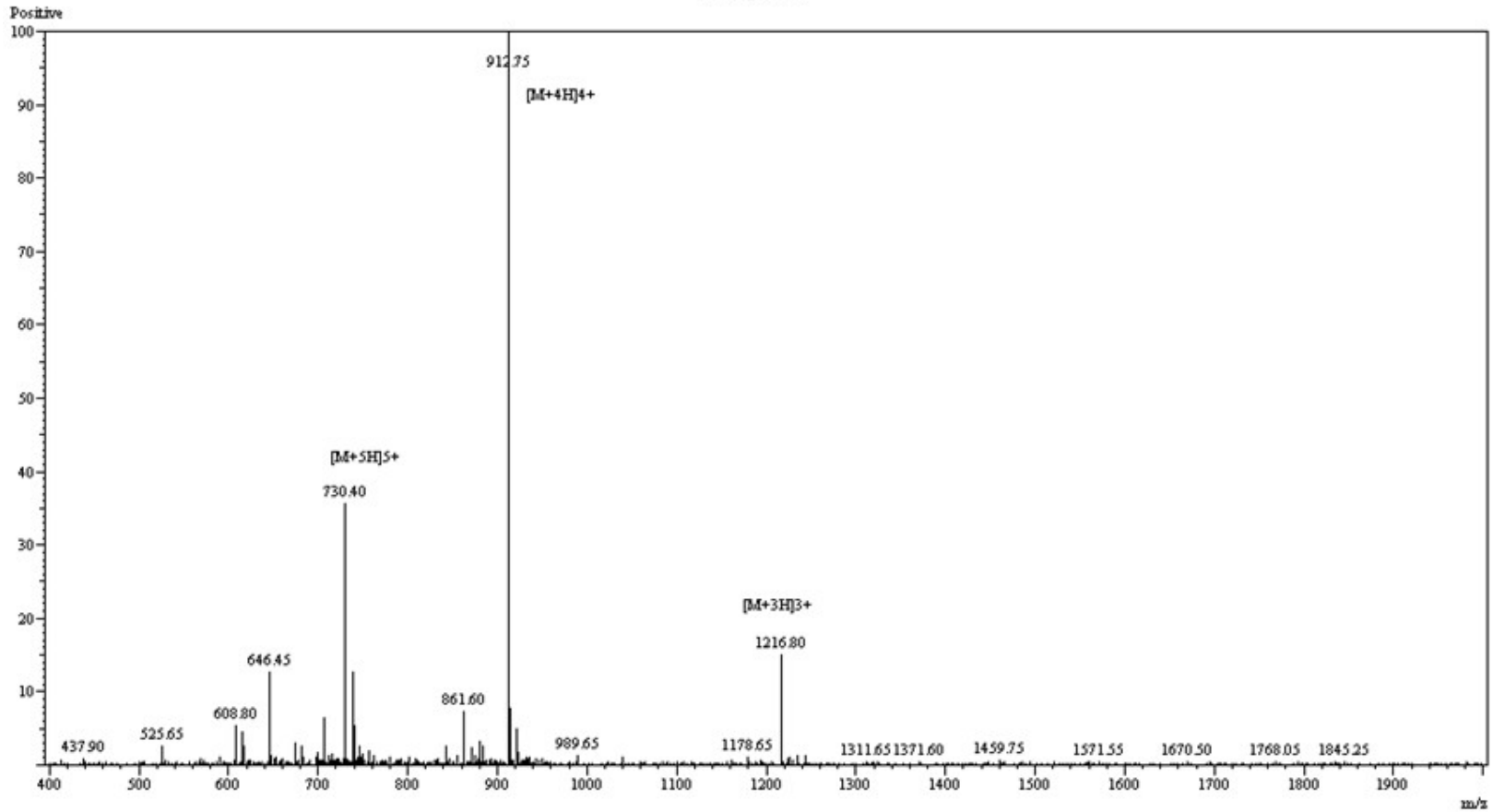


MS Report

Peptide ID: CJC1295 DAC

MW:3647.15

Mass Spectrum



MS Report
Peptide ID: CJC1295 DAC
MW:3647.15

MS conditions:

Probe:	ESI	Probe bias:	-3.5kv
Nebulizer Gas Flow:	1.5L/min	Detector:	1.0kv
DL:	-20.0v	T. Flow:	0.2ml/min
DL Temp:	250°C	B. conc:	50%H2O/50%ACN
Block Temp:	200°C		