

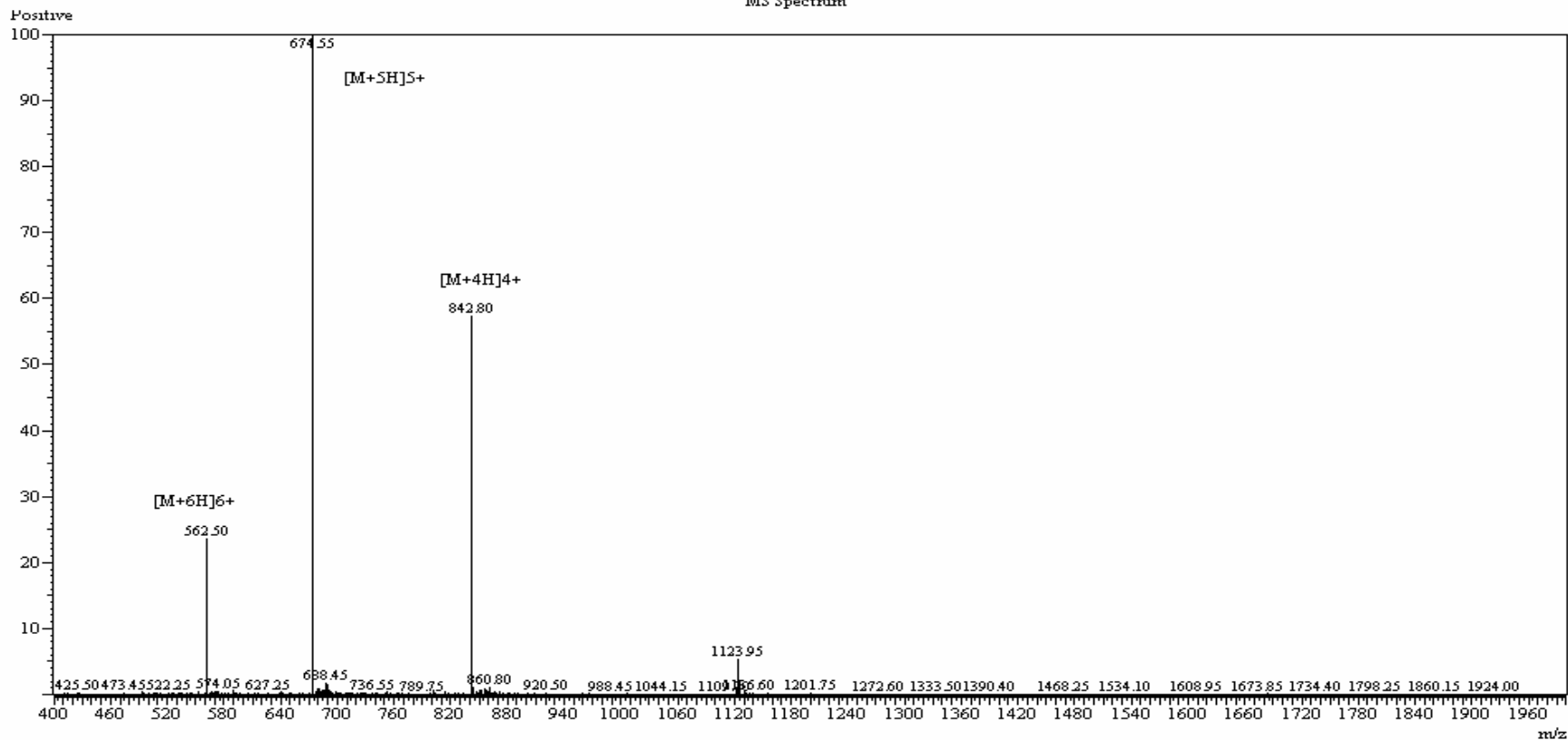


Melanotan US Inc.
Leader in Peptide Synthesis

MS Report CJC1293

MW: 3367.97

MS Spectrum



MS Report
CJC1293
MW: 3367.97

MS conditions:

Probe:	ESI	Probe bias:	+4.5kv
Nebulizer Gas Flow:	1.5L/min	Detector:	1.5kv
CDL:	-20.0v	T. Flow:	0.2ml/min
CDL Temp:	250°C	B. conc:	50%H2O/50%ACN
Block Temp:	200°C		