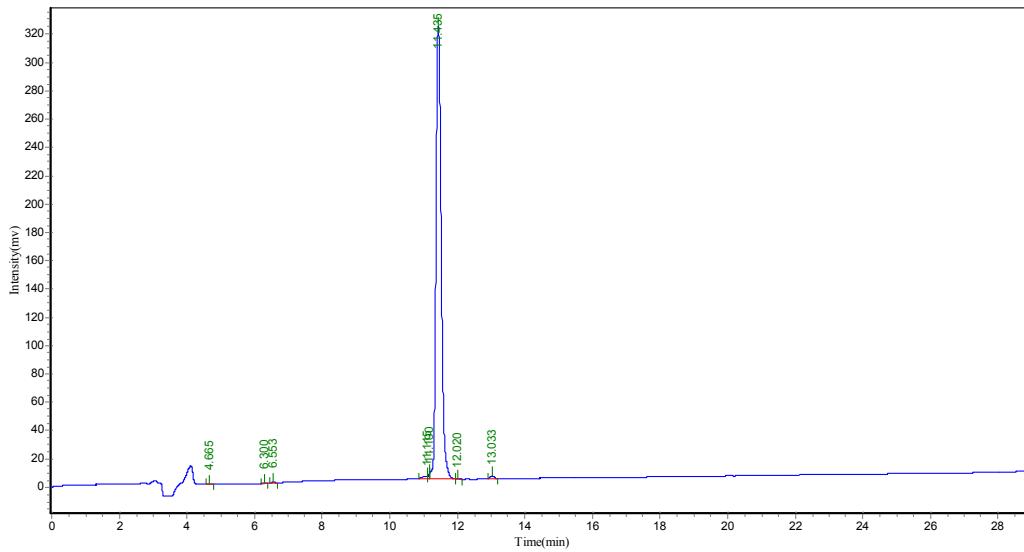


The conditions:

Column:	4.6×250mm, Venusil XBP-C18		
Solvent A :	0.1%Trifluoroacetic in 100% Acetonitrile		
Solvent B :	0.1%Trifluoroacetic in 100% Water		
Gradient:	A	B	
	0.01min	32%	68%
	25.0min	57%	43%
	25.1min	100%	0%
	30.0min	Stop	
Flow rate:	1.0ml/min		
Wavelength:	220nm		
Volume:	5ul		

The Map :



The data:

Peak No.	Ret Time	Height	Area	Conc.
1	4.665	465.970	3049.250	0.0872
2	6.300	480.851	3217.100	0.0920
3	6.553	429.394	3204.102	0.0916
4	11.115	1582.147	14327.216	0.4098
5	11.190	4165.292	11996.246	0.3431
6	11.435	320109.938	3440990.500	98.4234
7	12.020	428.492	3410.567	0.0976
8	13.033	1941.865	15916.702	0.4553
Total		100.0000		